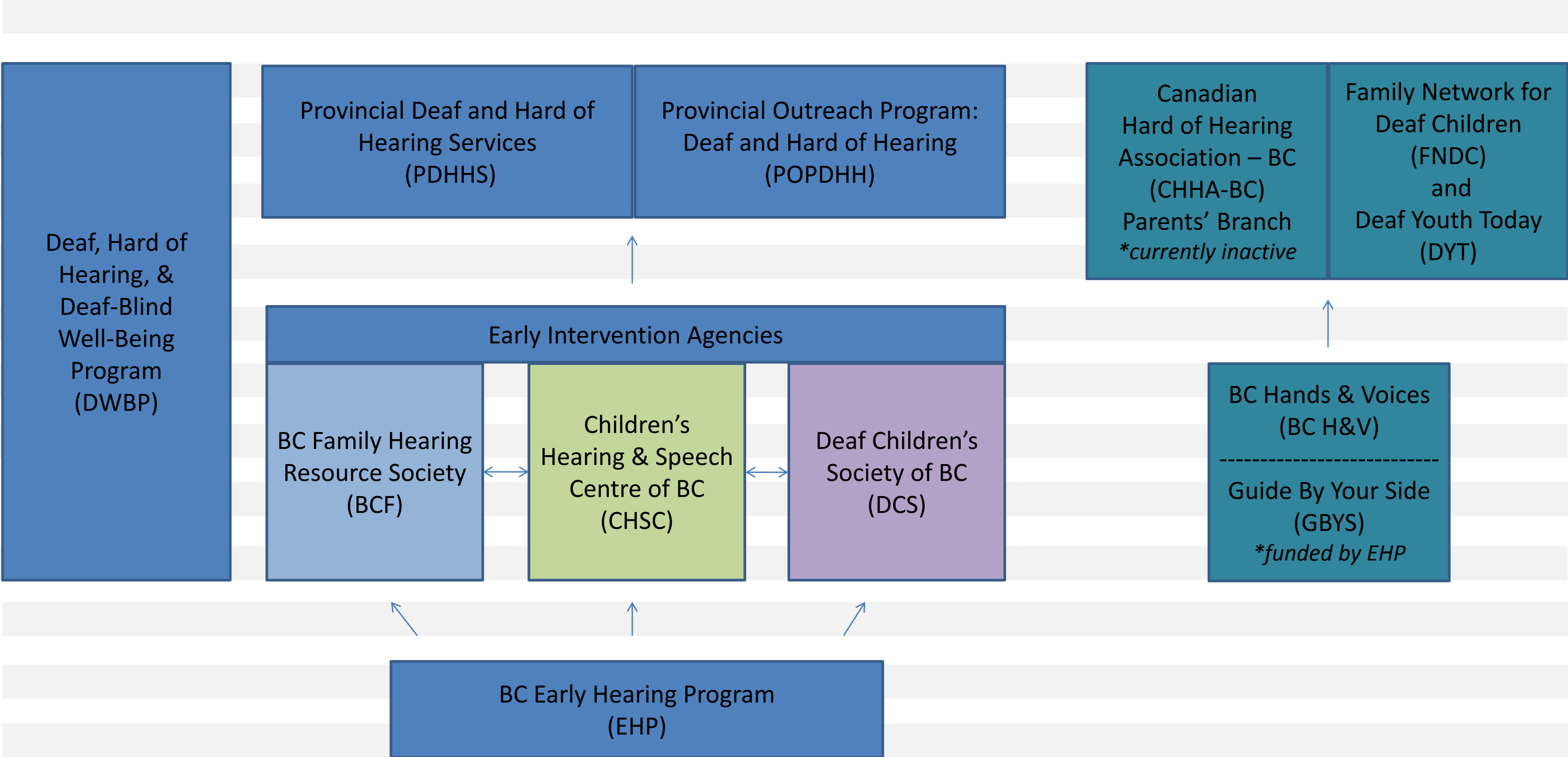


A Quick Reference Guide for Families with Young Deaf and Hard of Hearing Children in BC

Compiled by Brianne Braun

PROVINCIAL SERVICE PROVIDERS

PROVINCIAL PARENT-RUN ORGANIZATIONS



Birth

Age 1

Age 2

Age 3

Age 4

Age 5

Parent and Child Group Programs January - June 2019

(SSS: Sign Supported Speech)

Bouncy Babies - English (SSS)
10:00 - 12:00, Mondays (Surrey)

Butterfly Hands - ASL
10:00 - 11:30, Tuesdays (Surrey)

C&C: Communicate and Connect - English (SSS)
10:00 - 12:00, Second Friday of each month (Vancouver)

ELF: Early Literacy Foundations - ASL & English
10:00-11:30, Wednesdays (Burnaby)

Mother Goose - English
10:00 - 11:00, Thursdays (Vancouver)

Rhythm and Moves - English (SSS)
10:00 - 11:15, Thursdays (Surrey)

ASL Tots - ASL
9:30 – 11:30, Wednesdays (Surrey)

PNP: Partners and Playmates
- English (SSS)
9:30 - 11:30, Mondays (Surrey)

PALS: Parents and Language Stimulation - English (SSS)
10:00 - 12:30, Mondays and Wednesdays (Surrey)

VALS: Visual and Language Stimulation - ASL
10:00 - 12:30, Tuesdays and Thursdays (Surrey)

Preschool and Childcare January - June 2019

CHSC Preschool - English
Preschool 9:00 - 12:00 / **Pre-K** 9:00 - 3:00, Monday to Friday (Vancouver)
*Before and after school childcare available 8:00 - 9:00 AM, 12:00 / 3:00 - 4:45 PM

DCS Preschool - ASL & English
Preschool 9:00 - 12:00, **BridgeLAB** 12:00 - 2:00, Monday to Friday (Burnaby)
*Before and after school childcare available 8:00 - 9:00 AM, 2:00 - 6:00 PM

**CHSC and DCS charge fees for preschool and childcare services*

Birth

Age 1

Age 2

Age 3

Age 4

Age 5

Parent Programs January - June 2019

ASL for Parents

9:30 - 11:00, Mondays (Burnaby)

ASL for Grandparents

9:30 - 11:00, Fridays (Burnaby)

Contact your
home agency
for more
information!

Parent TREK: Transition Resources for Entry to Kindergarten

7:00 - 8:30 PM, One
Thursday a month, plus a
two-day workshop in June
(Burnaby)

PEER Kindergarten Transition Program

**For d/hh children using spoken
language and transitioning to
mainstream schools*
7:00 - 8:30 PM, One Wednesday a
month, plus a three-day
workshop in May (Surrey)

Early Intervention Agencies

BC Family Hearing Resource Society - www.bcfamilyhearing.com

Children's Hearing & Speech Centre of BC - www.childrenshearing.ca

Deaf Children's Society of BC - www.deafchildren.bc.ca